



DALSOUPLÉ

'we are rubber'



‘the most flexible rubber company in the world.’

Dalsouple rubber is completely different from other resilient flooring products such as vinyl or linoleum.

Dalsouple rubber is **beautiful, tactile, flexible, warm and soft.** In addition to our massive standard ranges most of our products are available in an infinite palette of richly saturated custom colours made specially for you.

Many of our products are also available in different textures and patterns to provide you with endless design possibilities.

Dalsouple rubber has many other benefits that make it suitable for a wide range of indoor and outdoor applications. It insulates, absorbs noise and resists both water and burns. It's slip resistant, supple, tough, practical, hygienic and has less environmental impact than most of its competitor products. Just in case you didn't know, we also make safety products including marine fire safety rubber.

You can now choose to have your Dalsouple floor made in either our standard synthetic SBR rubber (sometimes called industrial rubber) or DaINaturel new generation natural rubber.



DalNaturel

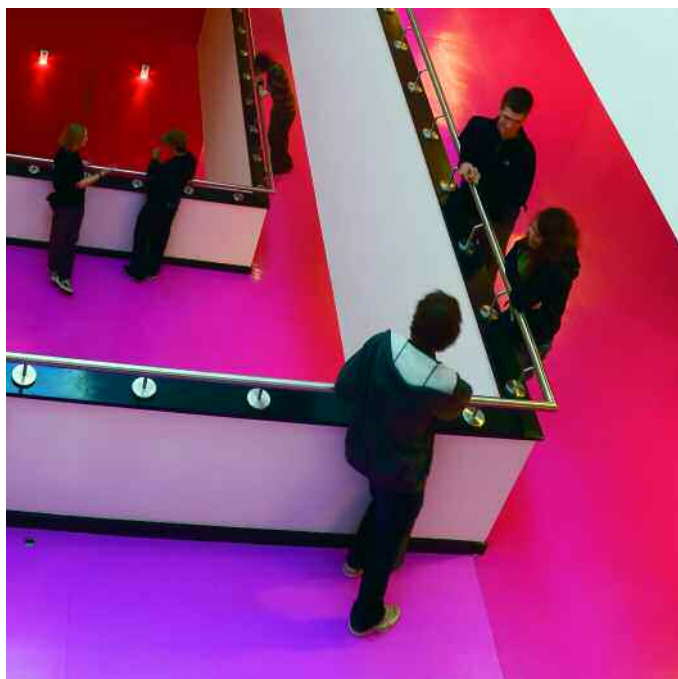
95% of all our products are available in DalNaturel natural rubber. We firmly believe that DalNaturel is the most environmentally-friendly and sustainable resilient floorcovering in the world.

It's a common misconception among specifiers that modern rubber flooring is a 'natural' product. In fact, virtually all the rubber flooring on the market today is made from synthetic SBR, sometimes know as 'industrial rubber,' a petro-chemical by product. In environmental terms, synthetic rubber compares quite favourably with its main competitors - PVC, and even linoleum. But with sustainability now high on the design agenda, Dalsouple has decided it's time to take a quantum leap in improving the environmental profile of its products, simply by going 'back to nature'.

For more information, or to find out if your choice of Dalsouple floor is available in DalNaturel please contact us.

**DalNaturel natural rubber
for people, for the environment,
for performance**

DalUni



DalUni smooth finish tiles are available in any of our 80 gorgeous DalColours. But if you can't find the colour you want, we also offer a colour matching service. Please contact us for details.

Bilborough College, Nottingham by CPMG. Photo Martine Hamilton-Knight.

... choose from 80 DalColours



Prune



Bleu Oiseau



Bleu Ciel



Bleu Glacier



Bleu Pastel



Bleu Air France



Bleu Pâle



Céladon



Vert Toundra



Pistache



Vert D'eau



Azur



Turquoise



Lagon



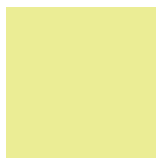
Malachite



Citron Vert



Anis



Pamplemousse



Vert Pomme



Vert Écume



Vert Écossais



Green



Vert Foncé



Sapin



Olive



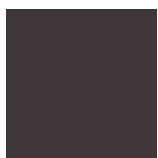
Gris Lyon



Gris Anthracite



Noir



Marron Nègre



Marron Daim



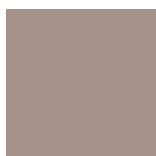
Fumée



Gris Chaillot



Reflet Acier Argent



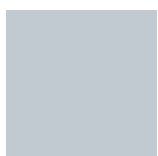
Antelope



Automne



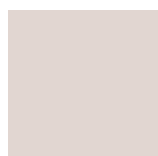
Gris Tourterelle



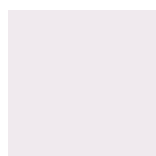
Gris Frais



Gris Paris



Mauve



Blanc Dakota



from top: City & Islington Lifelong Learning Centre by Wilkinson Eyre. Photo View. Deacons Law Tenancy, Perth, Australia by Carr Design Group. Photo Robert Frith.

DalTex



Uni



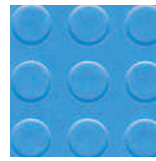
Granita



Pastille Métro



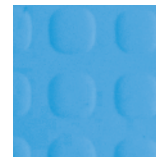
Pastille Alpha



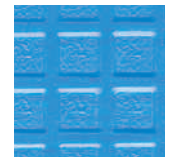
Pastille
Mini Alpha



Oméga



Gamma



Hêta



Marina



Mini Pavé



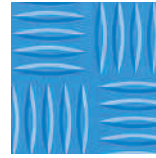
Petit Pavé



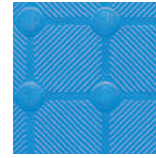
Terra



Sigma 1



Sigma 5



Épsilon



Quadra



Ardoise
Française



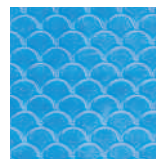
Ardoise
Italienne



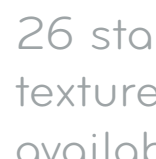
Rainure



Delta



Ramp



26 standard DalTex textured finishes available in any of our 80 DalColours or your custom colour.



Fossile



Cotto



Digitopolis



Maya



Grand Pavé



Sellafeld Exhibition Centre by Casson Mann.



Bilborough College, Nottingham by CPMG. Photo Martine Hamilton-Knight.

Please see previous page for our 80 gorgeous DalColours or choose your custom colour.

DalMicro



The Idea Store by Adjaye Associates. Photo Morley von Sternberg/Arcoïd.



Petit Carré Cannelé Micro Pastille Martelé



Petit Cannelé Petit Losange Point de Diamant

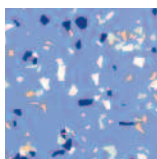
7 standard DalMicro textured finishes available in 80 DalColours or your custom colour.

DalMagnetic

An innovative solution for access floor installations. Tiles are fusion-bonded to a flexible magnetised backing and can be loose-laid on metallic access panels. Available in any of our 80 DalColours and in a selection of finishes. DalMagnetic is also available with DalMarbre, DalTerrazzo and DalFusion.



DalMarbre



DalTerrazzo



DalFusion



Uni



Ardoise
Italienne



Granita



Oméga



Pastille Alpha



Martelé

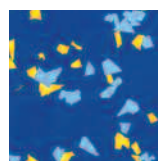


MTV On Air by Emulsion Architecture. Photo Leon Chew.

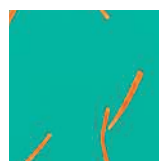
DalTerrazzo



Terrazzo



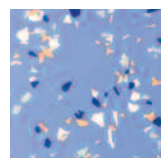
Terrazzo Triangles



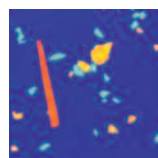
Terrazzo Lignes



Mini Terrazzo



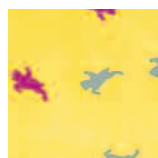
Mini Terrazzo Triangles



Terrazzo Mix



DalTerrazzo logo



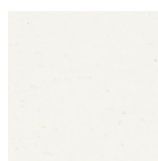
DalTerrazzo logo

Any combination of our 80 DalColours arranged in a choice of 6 terrazzo patterns or your own logo design. DalTerrazzo is available in DalUni smooth finish and DalMicro. Design your own DalTerrazzo floor on screen at dalsouple.com and request a sample.

DalFusion



Platine



Perle



Flint



Basalte



Breccia



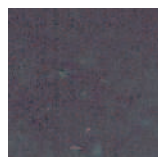
Cobalt



Zinc



Océan



Roche

DalFusion is available in 9 lightly speckled colourways selected by popular demand. DalFusion tiles are available in 25 DalTex finishes excluding Uni.

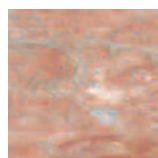
DalMarbre

DalMarbre is available in 10 standard colourways or your custom colourway.

DalMarbre is available in DalUni smooth finish and DalMicro.



Rouge Café



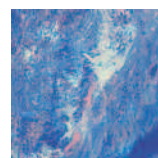
Corail



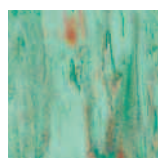
Biscuit



Rouge Griotte



Bleu Caraïbes



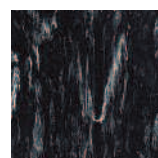
Menthe



Bleu Iceberg



Graphite



Ebène



Ivoire

DalSport DalKit & DalEquipe

High performance, heavy duty, easy-to-install interlocking tiles.



DalSport tiles have anti-fatigue cushioning and a lightly textured anti-slip surface. Spike and skate resistant, it is ideal for multi purpose gyms, ski stations and ice rinks. Also available as DalSport Eco, a 100% recycled rubber tile.



DalKit is an event floor with a self-draining base, perfect for internal and external exhibitions, corporate hospitality events and road shows. Also available as DalKit Eco, a 100% recycled rubber tile.



DalEquipe contains a high percentage of recycled rubber in a thick impact-absorbing base layer, which is ideal for many types of application, from sports centres to office environments. Available in DalUni smooth finish and DalMicro finish.



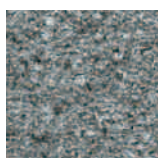
South East Essex College by KSS. Photo Gareth Gardner.

Dulwich College Nursery by Burn Cook Associates. Photo View.

Please see previous page for our 80 gorgeous DalColours or choose your custom colour.

DalLastic

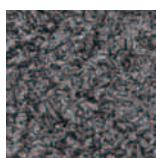
DalLastic tiles are an attractive and eco-friendly surface for outdoor use around swimming pools, on balconies and roof gardens, decks, terraces, paths and walkways. Made from 100% recycled rubber fibre.



Mercury



Silver Birch



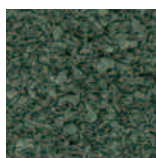
Metallic



Pumice



Bracken



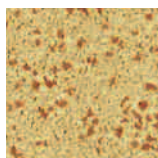
Fairway



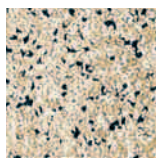
DalLastic in the garden of C4's Big Brother House.

DalLastic Plus

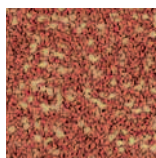
adds an EPDM (Ethylene Propylene Diene Monomer) top surface to create a terrazzo pattern.



Sun



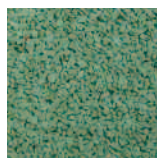
Dune



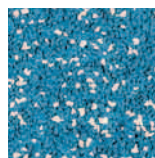
Molten



Beach



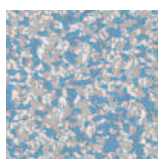
Savannah



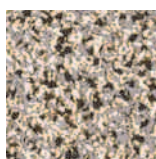
Surf

DalLastic Plus Sanded

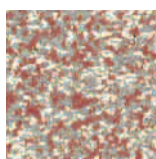
colourways are sanded to create an ultra smooth feel underfoot.



Cyclone



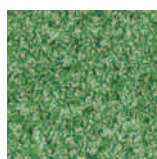
Mist



Tornado

DalLastic Polygrass

is a hard-wearing outdoor carpet with a cut pile polypropylene top layer bonded to a rubber base. Available in one solid colour.



Natural

Technical Data

Tile Size

DalUni

Tile Size DalUni smooth finish tiles 340mm x 340mm, 1760mm x 680mm or 610mm x 610mm for access panels.

DalTex & DalMicro

Tile Size DalTex tiles 680mm x 680mm. Granita, Pastille Alpha and Ardoise Italienne finishes 610mm x 610mm for access panels. Ardoise Italienne finish 340mm x 340mm.

DalMicro tiles 1760mm x 680mm. Petit Carré finish 610mm x 610mm for access panels. Martelé finish 340mm x 340mm.

NB With DalMicro there is no pattern match between tiles.

DalMagnetic

Tile Size DalMagnetic tiles in DalUni, DalTerraazzo, DalMarbre and Martelé finish 610mm x 610mm

DalMagnetic tiles in Granita, Ardoise Italienne, Oméga, Pastille Alpha and DalFusion 680mm x 680mm

DalTerraazzo DalMarbre & DalFusion

Tile Size DalTerraazzo and DalMarbre tiles with DalUni smooth finish 340mm x 340mm, 1760mm x 680mm or 610mm x 610mm for access panels.

DalTerraazzo and DalMarbre with DalMicro 1760mm x 680mm. DalFusion tiles 680mm x 680mm.

DalLastic

Tile Size DalLastic tiles 500mm x 500mm. DalLastic tiles, except Polygrass, are supplied with bevelled edges and are available in half tiles 500mm x 250mm.

100% Recycled DalLastic tiles are made from 100% recycled rubber fibre bound with coloured polyurethane resin in natural earthy tones that blend with the environment.

DalSport, DalKit & DalEquipe

Net tile size DalSport 603mm x 603mm. DalKit 666mm x 666mm and DalEquipe 817mm x 587mm

Dalsport for weightlifting areas

Over a period of time, continuous dropping of weights will cause some expansion of the tiles. Allowance should be made for trimming initially and at a later date.

DALSOUPLÉ

www.dalsouple.com

email info@dalsouple.com

tel +44 (0)1278 727777

fax+44 (0)1278 727788

Important Information

DalNaturel

95% of our products are available in DalNaturel natural rubber, excluding only the palest colours and certain special qualities. Please contact us to check if your choice is available in DalNaturel.

Special qualities

Available on request, excludes DalLastic. Oil and grease resistant, dissipative, electrically conductive, EFR extra flame resistant, low smoke and EFR, outdoor quality, WFR Class '0' for use on walls and ceilings, MFR (IMO certified), EUVS (extra UV stabilised). Due to technical limitations, not all colours are available in these qualities.

Standards and certification

Dalsouple tiles meet European standards in all key performance areas. For full details of test results visit dalsouple.com or email tests@dalsouple.com.

Slip resistance

Dalsouple rubber is designed to offer a good degree of slip resistance underfoot in dry conditions. However, it can still be slippery when wet. To minimise risk of slippage, use effective entrance matting around all external entrances, and use warning signs when cleaning takes place.

Thickness

Dalsouple rubber is available in a range of thicknesses. Dalsouple recommends a minimum thickness of 2.5mm for use on floors, other than for exhibition use. Thinner qualities are available for non flooring use.

Installation & maintenance

The tiles should be laid broken bonded in all cases. The back of the tiles should be brushed clean before laying.

For guidance ask for our Technical and Service Partners Guide.

Non flooring use

Interlocking tiles and DalLastic ranges are not suitable for non flooring use

Special colours

Dalsouple offers a special colour matching service. Dalsouple will achieve the best possible colour match, bearing in mind that colours may vary between different materials, and that colour appearance will vary based on lighting conditions and angle of view. Please note that the DalLastic range is not available in special colours.

Colour reproduction

The colours shown in this brochure are as accurate as possible given the limitations of the colour printing process. For an exact colour match, ask us for a real colour sample.



95% of all our products are available in DalNaturel natural rubber. We firmly believe that DalNaturel is the most environmentally-friendly and sustainable resilient floorcovering in the world.

www.dalsouple.com

Showground Road, Bridgwater, Somerset TA6 6AJ England
Contract enquiries: tel +44(0)1278 727777 fax +44(0)1278 727788 email info@dalsouple.com
Retail enquiries: tel +44(0)1278 727733 fax +44(0)1278 727766 email retail@dalsouple.com

